



# Recruitment Information Pack



# Contents

<b>Introduction</b>	<b>2</b>
<b>Our Story to Date</b>	<b>3</b>
<b>Our Mission</b>	<b>4</b>
<b>Our Vision</b>	<b>4</b>
<b>Our Values</b>	<b>4</b>
<b>Our Strategic Objectives</b>	<b>5</b>
<b>Charity Behaviours</b>	<b>6</b>
<b>What is a Cancer Focus Northern Ireland Therapeutic Support Centre?</b>	<b>7</b>
<b>Organisational Structure</b>	<b>8</b>

# Introduction

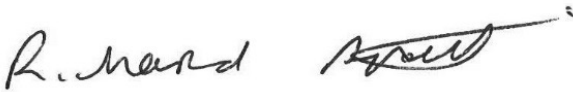
Dear Applicant

Cancer Focus NI is a local voluntary organisation that aims to eliminate cancer, where possible, and reduce its impact on our society. We were Northern Ireland's first cancer charity and in 2019 we celebrated our 50th Anniversary. Since our founding we have had four main pillars of endeavour: **cancer prevention, services to people affected by cancer, funding local cancer research and campaigning and advocacy work**. While we have stayed true to our founding principles, how we have delivered on our mission has grown and developed over the years.

We invite you to read through this Information Pack.

If you wish to apply for a role, please ensure you submit an up-to-date, accurate copy of your CV and cover letter before the application deadline

**Yours faithfully**

A handwritten signature in black ink, appearing to read 'R. Spratt', with a long horizontal flourish extending to the right.

**Richard Spratt**  
**Chief Executive**

# Cancer Focus NI

## Our Story to Date

Cancer Focus NI was established in 1969 initially to fund cancer research in Northern Ireland. The founding members very quickly realised that while local cancer research was needed, there was a similar pressing need to inform the public about the causes of cancer and how they could reduce their risk.

There were also people living with the disease for whom there were few options for support and advice. It was likewise recognised that to deliver real change we need effective public health policies and provision.

The four pillars of endeavour were thus formed and still shape our work today. The charity was originally called the Ulster Cancer Foundation. We changed our name in 2012.

In 2023, we launched our new five year strategy to support local people on their cancer journey. Our goal in the next five to seven years is to open five Therapeutic Support Centres in towns and cities across Northern Ireland.



## **Mission**

Supporting local people on their cancer journey; we will work to reduce the risk, impact, and outcomes of all cancers.

## **Vision**

We want people to live their most fulfilled lives with access to world-leading, equitable cancer support, treatment, diagnosis, prevention, and research.

## **Values**

Our guiding principles will shape the future direction of our charity.

### **Innovative**

We will develop a range of quality cancer support services and health improvement initiatives that are evidence-based and pioneering.

### **Compassionate**

We will continue to provide free services to help support local people on their cancer journey.

### **Bold**

We will not be afraid to make difficult decisions and take courageous actions in the interests of local people.

### **Connected**

We will connect and collaborate with local communities and sector partners including the Department of Health, Public Health Agency, Health Trusts, and other charities to create a fairer and healthier society.

### **Honest**

We will be transparent in our work, show respect for those we meet, and highlight our impact at all times.

# Our Strategic Objectives

## **To Be Your Local Cancer Voice**

Be an effective advocate, operating in local communities and speaking up for all people with cancer in Northern Ireland.

## **To Prioritise Healthy Living**

Increase public awareness of how to reduce the risk of cancer and promote healthier living.

## **To Champion Local Research**

Fund world-class, innovative cancer research.

## **To Sustain Our Impact**

Grow local support for our work and services.



# Charity Behaviours

**At the core of our charity's work,  
we will...**

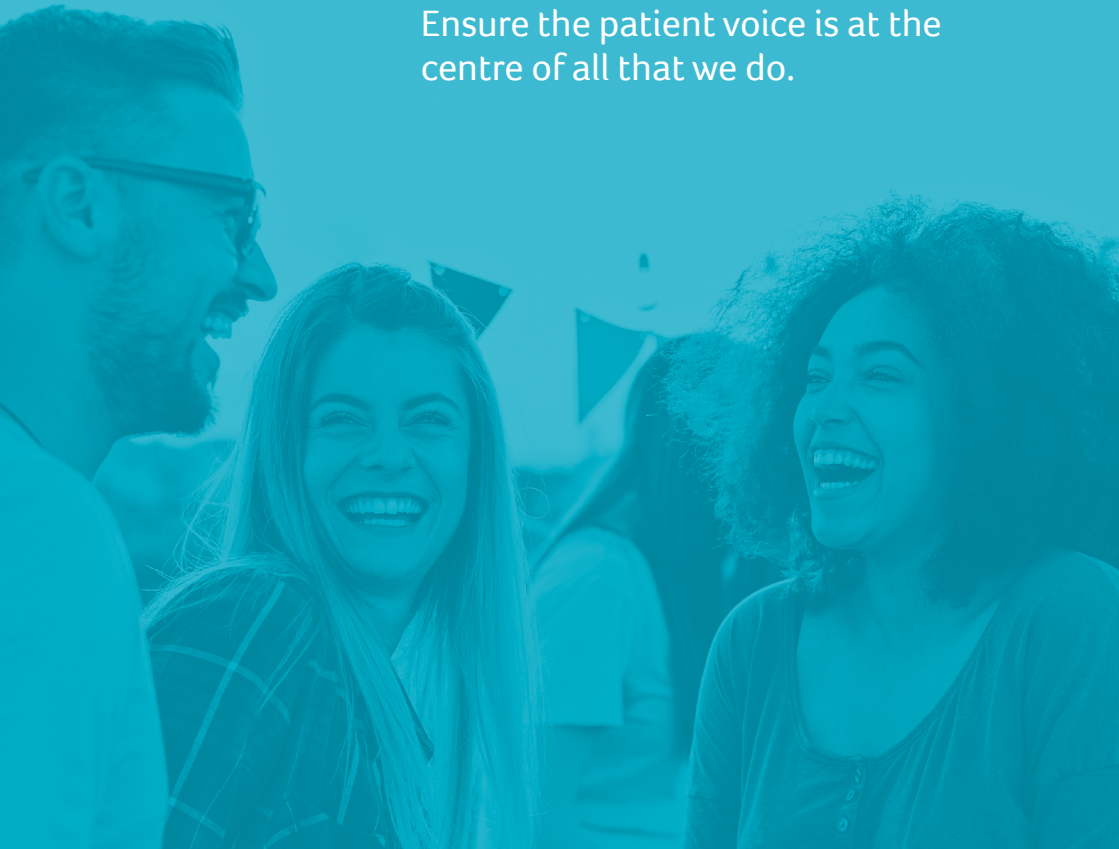
Be community focused and people  
centric.

Tackle health inequality in all aspects  
of our work.

Reach out to those on the margins in  
'hard to reach' communities.

Work sustainably with environmental  
consciousness in all that we do.

Ensure the patient voice is at the  
centre of all that we do.





# What is a Cancer Focus Northern Ireland Therapeutic Support Centre?

At its core, Cancer Focus Northern Ireland's future strategy is to create spaces and environments that radiate a sense of sanctuary and welcome.

We envisage places of community that those on a cancer journey feel drawn towards and are not intimidated by. Our Support Centres will be strategically placed across Northern Ireland. They will provide flexibility in how people engage, from being able to drop-in and have a coffee with a cancer specialist to availing of more tailored, structured individual or group therapeutic support. Most importantly, we want people to experience and have access to a place of social connection and to have the opportunity to participate in and be part of a community where they feel comfortable and understood.

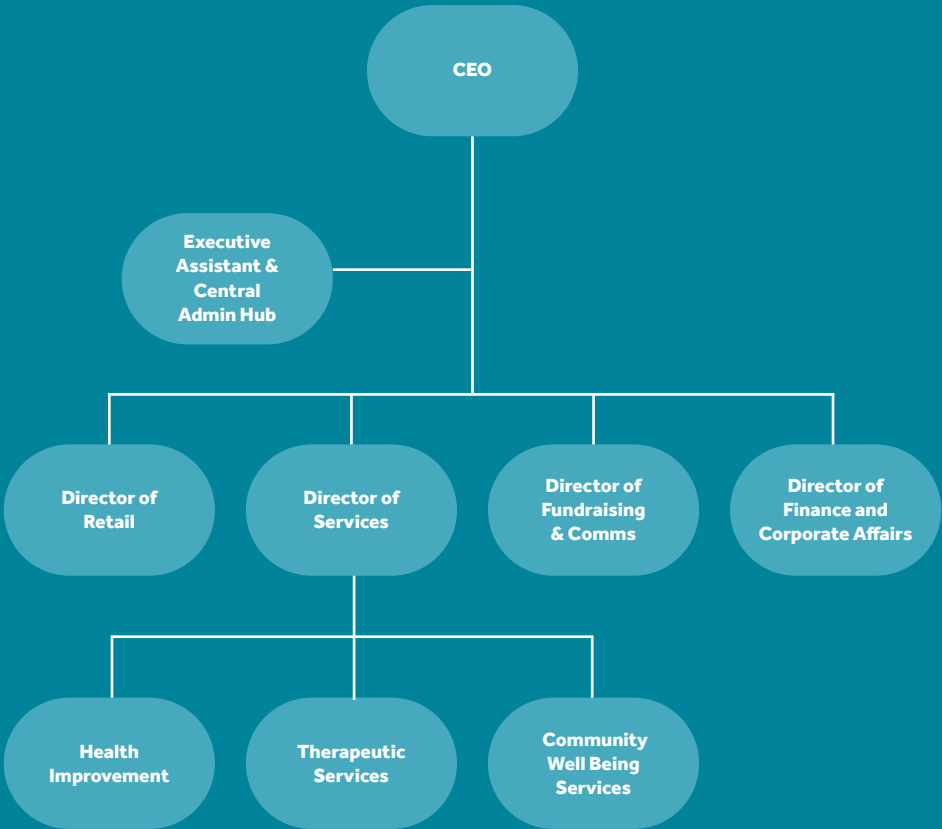
The look and feel of our Centres will be crucial to how patients and service users will interact with them. They will be thoughtfully and carefully designed to ensure that visitors experience a sense of being apart from the clinical environment of a hospital, or the hustle and bustle of everyday life.

It is important to us that they are close to, but separate from, the places of diagnosis and treatment.

The Centres will offer space and opportunity for relaxation, reflection and solace as well as providing emotional and practical support along with access to information and advice relevant to the needs of each person and their family.

Every visitor who will cross the doorstep of a Cancer Focus Northern Ireland Therapeutic Support Centre will have their own story, their own set of unique fears, hopes and aspirations. We will welcome everyone as they are and where they are, when they take the courageous step to come in. We will be rooted in communities and equipped to embrace and provide the support network required for every person who invites us to join them on their cancer journey.

# Organisational Structure





Cancer Focus Northern Ireland  
40-44 Eglantine Avenue  
Belfast BT9 6DX

T: 028 9066 3281  
E: [hello@cancerfocusni.org](mailto:hello@cancerfocusni.org)  
[www.cancerfocusni.org](http://www.cancerfocusni.org)



Charity No: NIC 101307

