

**SUSTAINABLE FUTURES**  
ADVANCED DIPLOMA IN  
MANAGEMENT PRACTICE



**“A BRILLIANT  
EXPERIENCE THAT  
FAR EXCEEDED MY  
EXPECTATIONS.  
HAVING THE  
OPPORTUNITY TO  
TAKE TIME OUT TO  
EVALUATE WHERE  
YOU ARE AT IS  
ALWAYS  
BENEFICIAL”**

**^ CHARLIE FISHER,  
SOCIAL ECONOMY SOLUTIONS**





## THE COURSE

## COURSE STRUCTURE & CONTENT

**“80.5% OF SSE IN IRELAND PARTICIPANTS SURVEYED WERE MORE INNOVATIVE AS A RESULT OF EXPOSURE TO NEW MANAGEMENT TOOLS & TECHNIQUES”**

▲ Colin Stutt Consultancy

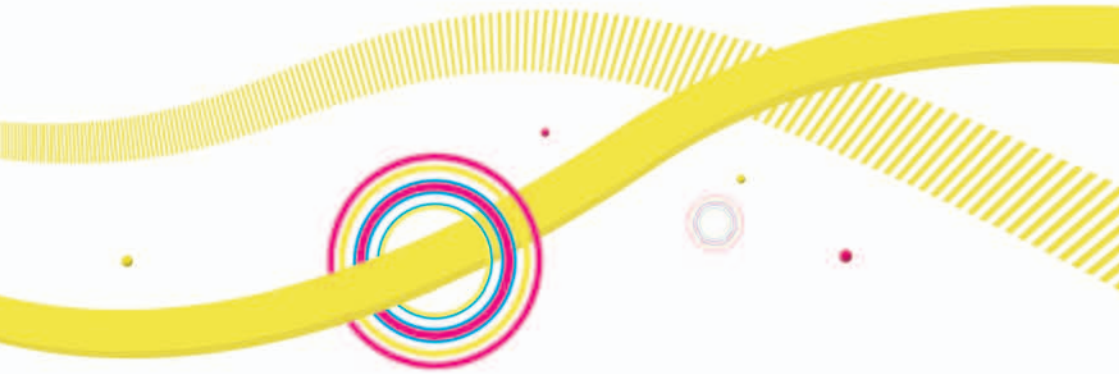
The aim of the Sustainable Futures which leads to an Advanced Diploma in Management Practice is to build the personal and managerial capability of managers operating in the third sector.

The mode of delivery for the workshops is highly participative and takes account of different learning preferences. Participants will be given the opportunity at the outset of the programme to identify their individual learning style, which will inform their development strategy.

**Who should attend:** This is a management development initiative targeted primarily at managers or those with the potential to develop into a management role in social economy and not for profit organisations.

This 12 month programme is run on a part time basis and structured around six modules each lasting 2 days, each module will have a 1/2 day peer learning session called an Action Learning Set.

All participants will receive on-going studies advice and project supervision. Successful completion of the programme will result in a University Graduation ceremony.



**MICHELLE  
BOLTON**

**The Cedar Foundation:**

Michelle is Deputy Training Manager of the Cedar Foundation, which provides services for people with disabilities.

The course enabled her to review the commerciality of Cedar's operations, with the result that they are moving towards full-cost pricing of their services.

"Assessment of learning was through practical assignments relating to ones own organisation. The lectures provided a great opportunity to share learning and experience between students working in different environments of the third sector and has provided a great opportunity to network and identify various contacts for the future."



**MAY DE  
SILVA**

**Women into Politics:**

Women into Politics is developing a social economy business to provide equality training for regional and local government and public and private sector organisations.

The organisation is also building a supporter base through annual tracking of past participants in its courses. They aim to use their equality experience in Northern Ireland to build a regional and national business.

"As a result of the Sustainable Futures programme, Women into Politics is in the process of setting up its trading arm. I have gained the confidence to write up our strategic plan (on my own) and the support of my mentor has been invaluable. The new changes within the organisation are a direct result of the Sustainable Futures programme."



**CHARLIE  
FISHER**

**Social Economy Solutions ROI:**

Specialist provider of training and consultancy to the Social Economy Sector on an all Ireland basis, targeting marginalised and socially excluded groups and communities.

"Sustainable Futures has helped me to realise that in order to secure a future for the social economy sector we must apply the tools used in the business world, be unafraid to make a profit but never at the expense of our social mission"

**Organisations who have participated include:** Community Foundation for NI, Childline NI, Women's Support Network, Lloyds TSB Foundation for NI, Cliftonville Community Forum, Arts & Business, VOYPIC, Ardmonagh Family & Community Association, YMCA, The Beat Initiative, N2W Project, Chinese Welfare Association, Nippa, Praxis

# PROGRAMME CONTENT

The Programme covers six modules, details of which are outlined below:

## **Module 1** **Managing Personal Effectiveness**

This introductory module focuses on the individual, their perceived strengths and weaknesses and areas for development. A Personal Development Plan will be developed.

## **Module 2** **Leadership, Managing People and Teams**

Organisations need leaders at all levels not just at the top. This module starts with the premise that managers get things done through others and therefore focuses on the themes of leadership, motivation, delegation, effective teambuilding and communication.

## **Module 3** **Planning for Sustainability**

Students will consider what is meant by a sustainable economy and the requirements for a sustainable society. Within this context students will learn how to use strategic planning tools to address the triple bottom line – social, financial and environmental – within their own organisational context.

## **Module 4** **Managing Marketing and Stakeholder Satisfaction**

The aim of this module is to enable participants to develop their knowledge and understanding of the concepts and practices of marketing and to gain an appreciation of the important area of delivering stakeholder satisfaction.

## **Module 5** **Managing Finance and Resources**

The aim of this module is to enable participants to critically evaluate and appraise the performance of the organisation as a whole, and sub-sets within that organisation and to use accounting-based information for planning, decision-making and control.

## **Module 6** **Managing Organisational Improvement**

Performance measurement, benchmarking and quality assurance models and systems are the central focus of the Managing Organisational Improvement module.

## HOW MUCH DOES IT COST?

The fees structure varies in different locations but in general students are helped to generate sufficient income. Grants and bursaries are available for a limited number of places.

## HOW TO APPLY?

If you would like to apply please telephone the School for Social Entrepreneurs in Ireland on: Tel: 028 90328 918 for an initial chat and application form. When we receive your completed application we will arrange an interview.



people  
powered



this project is part financed by the european union through the peace II programme implemented by belfast local strategy partnership.

school for  
social  
entrepreneurs  
in ireland

interpoint centre  
20-24 york street  
belfast  
BT15 1AQ

t 028 9032 8918  
w [www.sse.org.uk](http://www.sse.org.uk)  
e [entrepreneurs@btconnect.com](mailto:entrepreneurs@btconnect.com)